



INSTRUCTION MANUAL

AIR COOLER

CM14EC-B



COLENT MARKETING PHILIPPINES INC.

TEL:(632)448-7674/442-3866/414-9890

Berton's Place, 46 Sta. Rosa Street,
(near the corner of Sto. Domingo St.),

Quezon City, Philippines 1115

www.colentco.com

THE COOLER
CM14EC-B

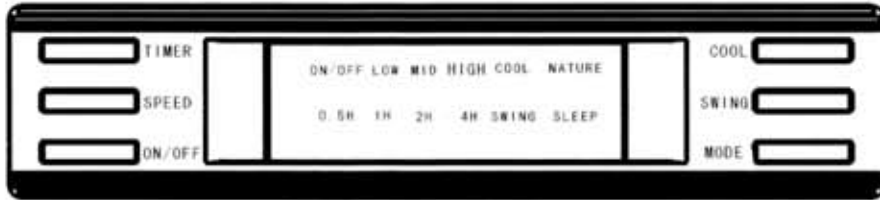
I'm grateful for your trust and support! As withso many customers, you kindly choose the excellent and luxurious evaporative air cooler CM14EC-B developed recently by our company.

Contents

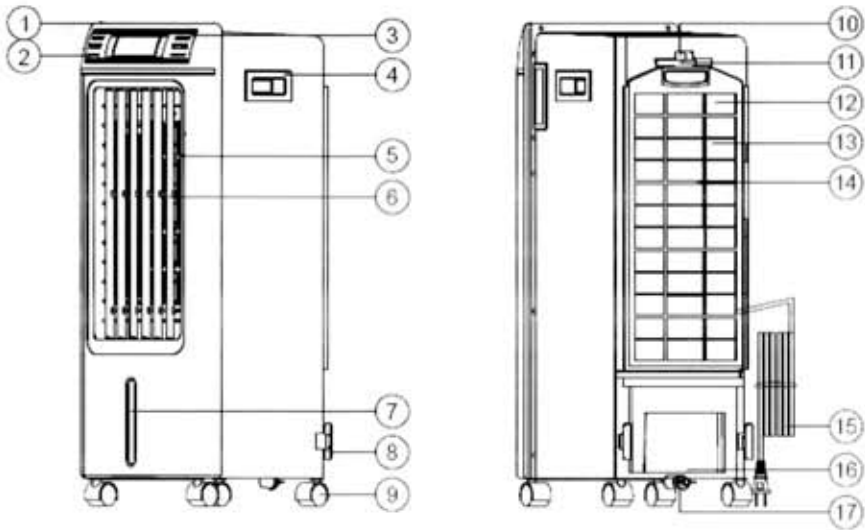
I. Functions.....	2
II. Warnings and Security Rules.....	4
III. Main Technical Parameters.....	6
IV.Usage of Ice Box.....	7
V. Cleaning and Protection.....	8
VI. Electrical Schematic Diagram.....	10
VII. Malfunctions and Maintenance.....	11

I. Functions

CM14EC-B Remote Control



Product Appearance and Main Components



- 1.Cover 2. Button 3. Control panel 4. Handles
- 5.Horizontal blades 6.Vertical blades 7.Water level indicator
- 8.Power cord holder 9.Caster 10.Remote controller holder
- 11. Remote controller 12.Curtain holder 13.Curtain 14.Air filter
- 15.Power cord 16.Water tank 17.Water tank fixer

CM14EC-B Operation Declaration

Note: the instruction describes all the functions. The users can choose them according to the actual product function.

On/off: when the fan is on standby, pressing the button means “on” ; repressing the button means “off”, the fan stops working, and all lights go out, then the fan is on standby.

Timer: in the working state, if the button is pressed, the timing off-time can be available; if pressed repeatedly, circular off-time can be set. The off-time is, in order, 0.5hour→1hours→1.5hours→…… 7.5hours.

Speed: in the working state, wind speed can be regulated by pressing the button; if the button is pressed repeatedly, air supply model can be chosen including three models, namely high- medium-low.

Cool: in the working state, pressing the button means start the cooling function, and when pressing it again, the cooling function ceases. (If the fan is devoid of water and in the heating state, the button is void)

Swing: in the working state, horizontal automatic air supply can be realized by pressing the button; but the air supply will be halted when the button is pressed once again.

Mode: in the working state, we could change the NATURE and SLEEP modes by pressing the button “MODE”.

★★★Attention:

If no water is supplied, please do not press cool button in order to protect the water pump. And please be careful to operate while adding water.

★★★Attention:

The fan is inappropriate for children, delirious persons and those short of experience and common sense to operate without supervision and instructions.

Ensure that the power supply is disconnected when moving and cleaning the unit.

II. Warnings and Security Rules

1. Part-time workers and unauthorized repairers are forbidden to repair or remold the fan.
2. Wet hands are not allowed to operate the fan to avoid electric shock..
3. If power cord is aged and knotted or the plug is damaged, they should be out of service at once and repaired by professional manufacture or full-time repairers with equal qualification.
4. It is not allowed to clean, maintain and move the fan when the power supply is connected.
5. Pull up the power plug when the fan is to be laid aside for a long time.
6. Do not insert foreign matters into the air inlet/outlet; otherwise, it will do damage to the fan.
7. It is not allowed to use the fan in an inflammable and explosive environment and not advisable to expose the unit to strong lighting.

8. Do not put the fan in an inclined or unbalanced position to avoid the fan falling down, which can be detrimental to the fan or the components inside.
9. The fan is applicable indoors while outdoor use is forbidden.
10. When the water tank is full, do not incline or collide the fan when putting or moving it. If you intend to move the fan, push it slowly and gently from side. please prevent the water from overflowing.
11. It's unallowable turning over the fan, or the accidents arise. In case the fan is turned over for careless causes and the fan has water in it, pull the plug right away. It should not be turned on before 24 hour's drying.
12. Do not put any articles on the fan and cover the air outlet with it.
13. When cleaning the surface of the fan, damp cloth (detergent can be added) is recommended, and corrosive detergent or solution is unallowable. Do not use the water to rinse the fan.
14. Do not close the air inlet/outlet with the wall, curtain and other real objects; otherwise, it will block the airflow, thereby influencing the air supply effects.
15. It is not permitted to knock or vibrate the fan when it is in action; otherwise, automatic halt can be brought about. At this point, re-start the fan only.
16. The applicable temperature range is -20℃ to 40℃. The water in the tank is easy to deteriorate and give off-flavor, so please change water regularly.
17. Do not put the fan under the power plug directly.
18. Do not use the fan around the bath, shower nozzle or swimming pool.
19. The fan is qualified to be maintained at the specified maintenance shops.

★★★Attention:

- Please keep the water level at an appropriate level---no more than the "MAX" level.
- If the cooling function is wanted, please keep the level no less than the "MIN" level.
- Please disconnect the power supply while adding water.

III. Main Technical Parameters

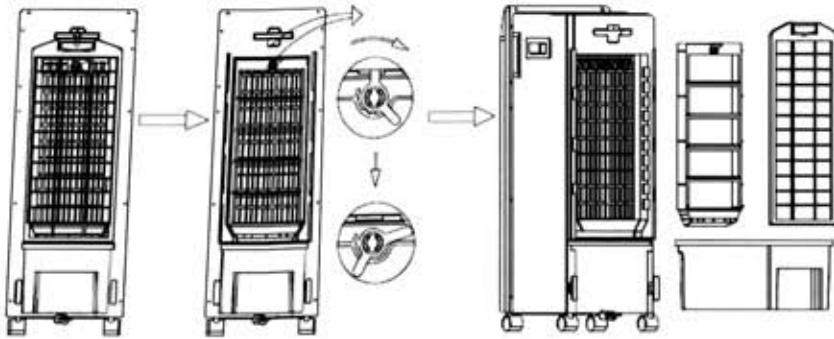
Model	CM14EC-B
Rated voltage	220V~
Rated frequency	60Hz
Rated power	70W
Capacity of water	4.5L
Wind speed	8.0 m/s
Evaporation capacity	450ml/h
Energy efficiency	9.0W/W
Noise	≤65dB
Type	Cooling

IV. Usage of Ice Box

The ice box has a special property of storing cool and keeping warm, which can absorb the heat from water to keep the water temperature below the environmental temperature (8 °C or so) for several hours and make the air flow more cooling.

1. Ensure that the box is filled with water, but no more than two-thirds full.
2. Put the box aforesaid into the refrigerator and make sure that the box is frozen thoroughly.
3. Put the frozen box into the water tank. and ten minutes later, the temperature inside the tank will be lower than 8 °C (environment temperature), and this is able to keep for four hours.
4. The fan is equipped with two ice boxes, and the refrigeration effect can last for four hours.

V. Cleaning and Maintenance



Kind Reminder: Over a long period of running, the wind capacity and dust removing effects of the filter screen and wet curtain are inefficient because of dust block. So it is overwhelmingly recommended cleaning them regularly.

1. Do not use chemical cleaning agents.
2. Disconnect the power supply before cleaning the fan due to the high voltage in it.

1. Clean the air filter

Cut off the power supply and unscrew the fan with a manual screwdriver. Then the filter screen can be dismounted. Take mild detergent and banister brush to clean the screen and wash it with clean water, finally, make sure that the filter is completely dry before

operating the unit.

2. Clean the wet curtain

Firstly, cut off the power supply, and then get the air filter screen down in order to take out the wet curtain from back cover. Next, use mild detergent and banister brush to clean the wet curtain and wash it with clean water, finally, dry it.

3. Clean the water tank

Cut off the power supply; take the air filter screen down, and then the water tank. The following is to remove the dirt in the tank by using a towel with some detergents,. After that, wash and rinse it with clean water, wipe it with a piece of dry cloth, finally, dry it.

4. Clean the outside cover

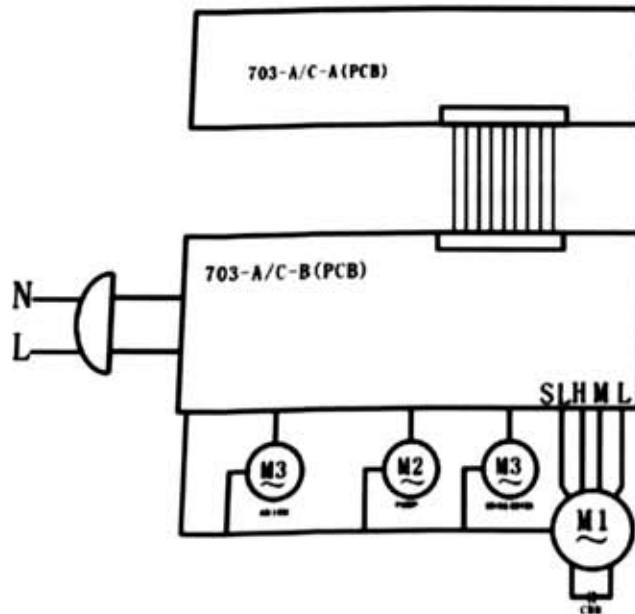
Clean the outer cover with a mild detergent and a piece of soft cloth.

★★★Attention:

- Disconnect the power supply before cleaning the fan due to the high voltage in it.
- No water remains over any part of the control panel.

VI. Electrical Schematic Diagram

CM14EC-B



VII. Malfunctions and Maintenance

Malfunctions	Possible reasons	Solutions
No display of LED	<ol style="list-style-type: none"> 1. out of power or poor contact. 2. Damaged screen. 3. Burned blown fuse. 4. Error of circuit board. 	<ol style="list-style-type: none"> 1. Power on to good contacts 2. Replace the screen. 3. Replace blown fuses. 4. Replace the circuit board.
Out of control	<ol style="list-style-type: none"> 1. Power interference. 2. Surrounding interference. 3. Errors of procedure. 	<ol style="list-style-type: none"> 1. Power off. 2. Move the fan and keep a certain space. 3. Replace the circuit board.
No wind or too slow speed	<ol style="list-style-type: none"> 1. The fan is stuck. 2. Filter screen is blocked. 3. Wind wheel is unfixed. 4. Errors of main control panel. 	<ol style="list-style-type: none"> 1. Check the machine and the fan . 2. Clean or replace the filter screen. 3. Replace the wind wheel. 4. Replace the main control panel.
Motor out of control	<ol style="list-style-type: none"> 1. Button on the main control panel is damaged. 2. The panel is damaged. 	<ol style="list-style-type: none"> 1. Replace the main control panel. 2. Replace the panel.
Drain valve leakage	<ol style="list-style-type: none"> 1. Drain valve fracture. 	<ol style="list-style-type: none"> 1. Replace the drain valve.