

MAINTENANCE & REPAIR SERVICE RULES

1. The rice cooker has a one-year warranty. During the term of warranty, we are responsible for the maintenance & repair of the product free of charge.
2. The beginning date of the term of warranty is the date on the invoice of the product.
3. Invoice of the product is required for maintenance & repair service.
4. The free of charge maintenance & repair service shall not be provided to the user in any of the following circumstances:
 - 1) Fault occurs when the product is not used in compliance with the requirements set forth in product manual.
 - 2) Fault occurs when the product is dropped or bumped.
 - 3) Fault occurs when the product is dismantled and repaired by the user unilaterally.
 - 4) The product is a sample for commercial exhibition, or a disposed product, or it has undergone an overload test of performance.
5. For products which guaranty terms have expired or products that is not suitable for maintenance & repair service free of charge, our Company's maintenance & repair service centre will still be of service to customers and users.

FOR AFTER-SALES SERVICE

Landline: (632)442-3866;412-6155; 413-8819;442-3856; 448-7674
Mobile: 0923-5345681; 0917-3079188; 0920-9746874
Email at: sales_mktg@colentco.com ; iwata@colentco.com ;
iwata2@colentco.com ; iwata3@colentco.com
Web: www.colentco.com

The logo for iwata features a stylized floral or starburst symbol above the brand name 'iwata' in a bold, lowercase sans-serif font.

RICE COOKER INSTRUCTION MANUAL



i-smart5C = 400W
i-smart10C = 700W
230V AC, 60HZ
www.colentco.com

Read this booklet thoroughly before using and save it for future reference

HOW TO USE

For cooking rice:

1. Measure the rice you need and wash it. A cup of rice requires approximately one and half cup of water.
2. Put the rice into the inner pot. Rotate the inner pot slightly several times so that the bottom of the inner pot contacts well with the heating tray.
3. Close the lid and ensure that the lid is connected well with the shell.
4. Plug the power cable into the rice cooker and connect the power supply.
5. Press the Function Selection Switch for rice cooking, and then press the rice cooking switch. The rice cooking indicator will be turned on, which indicates that the cooking has started.
(This function selection switch is not available on non-electronic rice cookers.)
6. When cooking is finished, the rice cooking switch auto trips. The warm keeping indicator will be turned on, which indicates that warm keeping has started.
7. Use the rice ladle included with the rice cooker to scoop out the rice.
8. Unplug the power plug after use to reduce power consumption.

For cooking congee & soup:

1. Wash the rice, put it into the inner pot and connect the power supply according to steps 1, 2, 3, 4 of rice cooking. Do not connect the power supply before cooking.
2. Add appropriate amount of water as needed for congee or soup.
3. Press the Function Selection Switch for cooking congee or soup. Press the rice cooking switch. The indicator for cooking congee or soup is on, which indicates that the rice cooker has started to cook until the congee or soup is ready.
(This function selection switch is not available on non-electronic rice cookers.)
When the rice cooker is cooking, the switch will not auto trip when cooking finishes. For both electronic and non-electronic rice cookers, you must pull up the rice cooking switch manually when the cooking finishes.
4. Unplug the power plug after use to reduce power consumption.

HOW TO USE

Water storage box:



Figure 1



Figure 2

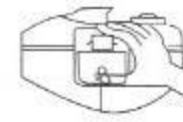


Figure 3

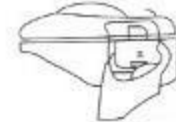
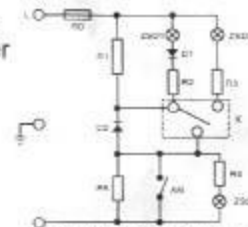


Figure 4

1. Put your hands on the positions as shown in Figure 1. Use your thumb to press the position between the two bars. Do not press too hard or the water in the box may spill.
2. When the water storage box is opened as shown in Figure 2, take it out carefully to avoid water spillage from the box.
3. After you wash the water storage box, put it into the container carefully as shown in Figure 3.
4. When the water storage box is correctly put into the container as shown in Figure 4, use your thumb to carefully push it inward until you hear a sound.

DIAGRAM OF RICE COOKER PRINCIPLE

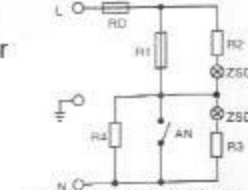
Electronic rice cooker



The diagram is subject to change without notice.

R1: Electric heating tray
ZSD1: Rice-cooking indicator
R2 R3 R4: Resistors
ZSD2: Congee or soup-cooking indicator
D1 D2: Diodes
ZSD3: Warm-keeping indicator
AN: Rice-cooking switch
K: Function selection switch
R5: Warm-keeping component
RD: Over-heat fuse

Common rice cooker



The diagram is subject to change without notice.

R1: Electric heating tray
R4: Warm-keeping component
R2 R3: Resistors
AN: Rice-cooking switch
RD: Over-heat fuse
ZSD1: Rice-cooking indicator
ZSD2: Warm-keeping indicator

TROUBLESHOOTING

	TROUBLE		CAUSE	TROUBLESHOOTING
1	The indicator is dark	The electric heating tray is not hot	The power cable or power plug of the rice cooker is not connected successfully.	Check whether the switch, the fuse of power plug and power socket and power cable are normal. Ensure that the power plug is connected successfully.
		The electric heating tray is hot	1. The cable to the indicator or the voltage dropping resistor becomes loose. 2. The indicator or the voltage dropping resistor is damaged.	Send the rice cooker to the designated maintenance & repair center for help.
2	The indicator is on	The electric heating tray is not hot	1. The middle cable becomes loose 2. The thermode part is damaged	Send the rice cooker to the designated maintenance & repair center for help.
3	The rice is undercooked or the cooking time is too long.		1. The braising time is not enough. 2. The electric heating tray is curved. 3. The inner pot is tilted and one side of it is not supported. 4. There are foreign articles between the inner pot and electric heating tray. 5. The shape of inner pot is modified.	1. Braise the rice as required. 2. For slightly curved tray, rub it down with fine sand paper. For badly curved tray, send the rice cooker to service centre for replacement. 3. Rotate the inner pot slightly and adjust the contact point. 4. Clean the electric heating tray with 320# abrasive paper. 5. Send the rice cooker to service centre to replace the inner pot.
4	The rice is overcooked.		1. The rice-cooking switch and leverage are abnormal. 2. The magnetic steel temperature limiter is abnormal.	Send the rice cooker to the designated maintenance & repair center for help.
5	The rice cannot keep warm automatically.		The warm-keeping sheet is damaged or the leverage part is not flexible.	Send the rice cooker to the designated maintenance & repair center for help.
6	Electricity leaks on the shell	Slight electric shocks can be felt	The water flows to the power plug or the switch, aggravating the insulation resistance.	Clean the shell. If the shell is carbonized badly, replace it.

Notice for users:

- The Company reserves the final interpretation rights of the manual.
- The appliance must not be immersed in water.
- The appliance is not intended for use by persons (including children) with reduced physical sensory or mental capabilities, or lack of experience and knowledge, unless they have been given supervision or instruction concerning use of the appliance by a person responsible for their safety.
- Children should be supervised to ensure that they do not play with the appliance.
- If the supply cord is damaged, it must be replaced by a special cord or assembly from the manufacturer or its service agent.
- Only for home use.

IMPORTANT SAFEGUARDS

1. Do not immerse or wash the rice cooker in water.
2. Always place the rice cooker on a stable and level surface. Do not place it in wet areas or near other thermal sources.
3. Keep the surfaces of the inner pot and electric heating tray clean and dry.
4. Do not touch the cooker lid as the rice cooker is cooking and turning hot.
5. Before taking out the inner pot, unplug the power plug.
6. Keep the rice cooker away from children.
7. Unplug the appliance when not in use or during cleaning. Allow the appliance to cool before putting on or taking off parts.
8. Do not place cloth on the lid while cooking.
9. This appliance is not for outdoor use.
10. The inner pots of other brands will not suit this cooker.
11. Do not let cord hang over edge of table or counter, or touch hot surfaces.
12. Do not place on or near hot gas, electric burner or heated oven.
13. Caution when moving appliance containing hot oil or other liquid.
14. Always attached the plug to the cooker first, then plug cord into wall outlet. To disconnect, turn all controls to "off" then remove plug from wall outlet.
15. Do not use appliance for other purpose than intended use
16. This product is classified as category 1 electrical appliance with protection. To ensure safety of use, good grounding devices are required for power supply. The power cable plug is a specific plug which cannot be modified. If power cord is damaged, replace it with specific power cord or parts purchased from the manufacturer or service centre.