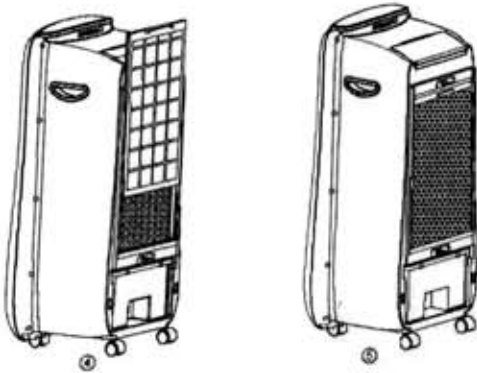


Cleaning and Maintenance

1. Unplug the unit before cleaning.
2. Please clean the water tank and filter mesh every two weeks.
3. Please clean the cooling pad when it is visibly dirty or every month (depending on the conditions of the surrounding area) to avoid build-up of dirt which may emit a foul odor.
4. Use a dry cloth to absorb remaining water on the atomizing cup, and dry it using a piece of soft cloth.
5. Pack this appliance properly and store it in a cool dry place if it is not to be used for a long period of time.



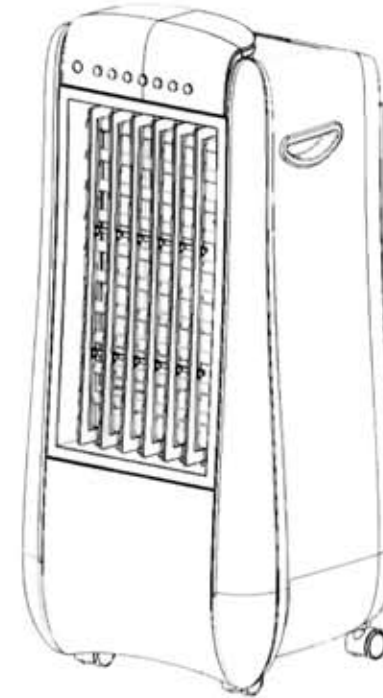
Cleaning:

1. Remove the plastic filter mesh, pic. ④⑤
2. Rotate the lock to horizontal position, pic. ④⑤
3. Clean the plastic filter mesh;
4. Clean the water tank and remove residue build-up on the tank.

CMPI
448-7674/414-9890
WWW.COLENTCO.COM



AIR COOLER INSTRUCTION MANUAL MODEL: E-COOL 16C



Thank you for your purchase. Before using this product, please read this manual carefully and keep it for future reference.

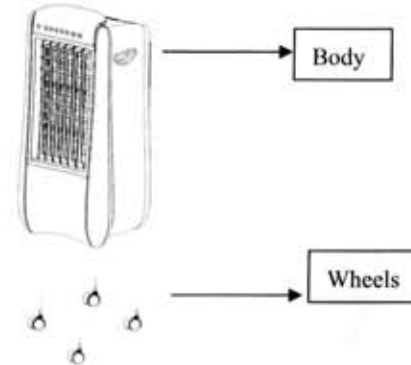
Introduction

This is an air cooler with an attractive and luxurious appearance, unique features and easy operation. You could feel the cool wind of the air cooler during hot days. Enjoy using this air cooler in your home or office.

Working Elements

The Air Cooler absorbs warm air from the surrounding and converts it to cool air through the process of water evaporation (driven from the water pump to the cooling pads) and blown back to the surrounding by the air blower.

How to Assemble the air cooler



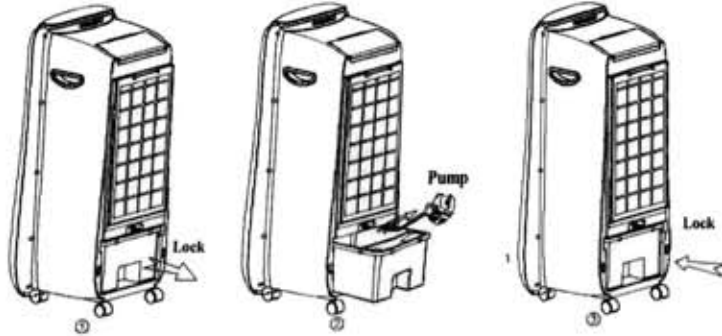
Position air cooler on a level floor, insert the wheels into the holes positioned on the bottom of the unit.

Parts Identification and Technical Specification

Model	E-COOL 16C
Voltage	220V
Frequency	60Hz
Power	85W
Water Tank	4.6L

Filling the Tank with water

Place the air cooler on a level ground and follow the steps below:



1. Rotate the water tank lock to horizontal position then pull out the water tank; Picture ①
2. Raise the water pump frame when the water tank is pulled out around 3/4 then remove the tank completely to fill or when cleaning; Picture ②.
3. Fill the tank with clean water
4. Re-install the water tank and the water pump frame and push the tank into position;
5. Lock the water tank in place. Pic. ③

Operating the air cooler

0.5h 1h 2h 4h ⏪ ⏩ ⚡ ⚙️ ⚙️ ⚙️ ⚙️ ⚙️ ⚙️ ⚙️ ⚙️

IR

TIMER ION WIND COOL SWING SPEED ON/OFF

1. Insert the plug into the electrical outlet and make sure that the indicator light is on.
2. Press "On/Off" button: Press this button, the fan starts, and the wind mode is in "normal" mode; Press this button again, all function turns off (the fan will continue running for 5 minutes to allow the cooling pad to dry whenever "COOL" function is used); You can press the "Off" button twice to discontinue this cooling pad drying function.
3. Press "**WIND**" button, to choose the wind type.
"Normal": Wind blows based on Low/Med/High speed.
"Natural": Imitates the blow of natural wind based on strong and soft wind.
"Sleep": The first thirty minutes blows as strong and soft natural wind and becomes mid natural wind. The second thirty minutes it changes to soft natural wind.
4. Press "**SWING**" button, to allow wind direction to move from left to right. Press this button again to stop this function.
5. Press "**SPEED**" button to choose the wind speed with Low-Mid-High, accordingly, the indicator light will turn on;
6. Press "**ION**" button to activate the ionizer which generates negative ions throughout the room and causes dust, pollen, mold spores, pet dander and etc. to attract on it. "ION" button may be used separately without turning the blower on.
7. Press "**COOL**" button and the water pump starts running. The water circulates on the cooling pad to allow warm air to be converted to cool air (warm air combined with water vapor) which lowers the room temperature effectively. When you turn the unit off after using the "cool" function the fan will continue running for 5 minutes before the blower stops to allow the cooling pad to dry. Pressing the "Off" button twice forces the blower to immediately stop running.
8. Press "**TIMER**" button to set the fan running time between 0.5 - 7.5 hours and automatically switches the air cooler off afterwards. There are 4 indicator lights for the timer. To set a time of 0.5 hour, you need to press the button once and to set 7.5 hours of running time you need to press the button continuously for 15 times.
9. Remote control must be aimed directly at the unit to function properly. If the remote control does not function properly, please check the battery condition.

Safety Precautions

1. Make sure this appliance and the power cord has no physical damage before operating the unit. Please consult the authorized service center when in doubt.
2. Do not touch the power cord or plug with wet hands.
3. Do not touch the water in the tank when the unit is plugged into the electrical outlet.
4. Do not insert any object into the grille guard or mist spray opening to avoid damaging this appliance.
5. Unplug the unit when it is not in operation, during cleaning or when moving it.
6. Do not pull the plug while the power is on. Always ensure that the plug is fully inserted into the electrical outlet before operating it.
7. Do not remove the water tank when the unit is plugged.
8. Do not add any chemical, metal ingredient into the water tank as these materials may damage the unit.
9. A safety water level switch will automatically shut off the ultrasonic transducer when water in the tank is below the minimum level. Please add water as needed.
10. This appliance must be used under the rated voltage and frequency as indicated in the rating label.
12. Do not disassemble, repair or modify this appliance on your own. Warranty will be void if repair is carried out by an unauthorized service center.
13. If the power cord is damaged, it must be replaced by the manufacturer or its service agent to avoid electrical hazard.
14. This appliance is not intended to be operated by persons (including children) with reduced physical, sensory or mental capabilities or lack of experience and knowledge unless they have been given supervision or instruction concerning the use of the appliance by a person responsible for their safety.