

# INSTRUCTION MANUAL

**Model: CM17IK-25 Outdoor Insect Trapper**

## **PRODUCT FEATURES AND FUNCTIONING PRINCIPLES:**

Please read the instruction manual given with this product carefully before using it

POTENT Outdoor Insect Trap is using the BLB energy saving bulb to lure insects, energy saving and low consumption and then the built in powerful DC suction fan will suck more insects flying around into the bottom collection box, which will be dried out to death by the continuous working suction fan and make them die of dehydration soon.

This unit is chemical free and environmentally friendly to human beings and pets, it will help to rid your backyard and home of annoying biters and ensuring you a bite-free summer! No high voltage! No zap! No unpleasant burning smell!

## **PRODUCT CONSIST OF:**

- One luring UV-A lamps, energy saving and low consumption and high efficacy;
- Tube shield with reflector function for more attraction.
- One powerful DC suction fan with ultra long working life.
- Anti insect escaping device.
- Removable bottom collection tray for easy cleaning.

## **SAFETY PRECAUTIONS:**

- IPX4 class, ideal for indoor and outdoor use;
- Read the instructions before using.
- Do not put any metal objects inside while working;
- Unplug the appliance from the outlet when not in use and before cleaning and repairing;
- Children should be supervised to ensure that they do not play with the appliance. Close supervision is necessary when any appliance is used by or near the Children;
- If any problems with its working, please contact the authorized service center.

## **Warning:**

1. Children cannot play with it.
2. Never put metal objects inside the unit while in operation.
3. Keep away from flammables.
4. Check the local voltage before operating.
5. If damaged, supply cords must be repaired or replaced by a qualified technician.
6. Cannot be used in garage, stable or similar places.

7. The appliance can be used by children aged from 8 years and above and persons with reduced physical, sensory or mental capabilities or lack of experience and knowledge if they have been given supervision or instruction concerning use of the appliance in a safe way and understand the hazards involved. Children shall not play with the appliance. Cleaning and user maintenance shall not be made by children without supervision.
8. Keep the appliance and its cord out of reach of children less than 8 years.
9. Children should be supervised to ensure that they do not play with the appliance.

**The compulsory cautions:** "This appliance is not intended for use by persons (including children) with reduced physical, sensory or mental capabilities or lack of experience and knowledge, unless they have been given supervision or instruction concerning use of the appliance by a person responsible for their safety"

**MAINTENANCE:**

Step1: Through the visible window in bottom collection box to judge the time for cleaning;

Step2: Remove the plug and twist the switch off;

Step3: Twist the bottom collection box and then throw away the insect bodies inside;

**Input Voltage:** 220V~60Hz

For after-sales service:

Landline-(632)442-3866;412-6155;413-8819;442-3856;448-7674

Mobile-0923-5345681;0917-3079188;0920-9746874

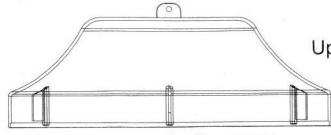
Email at sales\_mktg@colentco.com or iwata@colentco.com[1]

or iwata2@colentco.com[1] or iwata3@colentco.com[1]

Web- [www.colentco.com](http://www.colentco.com)

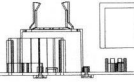


Loop



Upper cover

ON/OFF switch

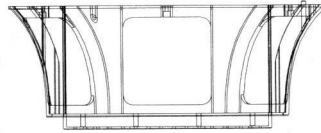


Transformer

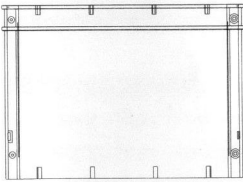
Upper plate



Luring tube



Plastic 1



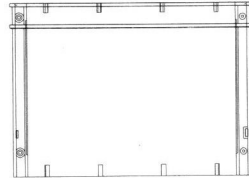
Plastic 2



DC fan

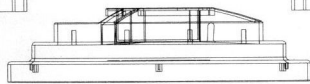


Motor



Plastic 3

Bottom plate



Anti-escaping trap door

Collection tray

