

TROUBLESHOOTING

Please check the troubleshooting chart below. It includes several common problems, which you can correct at home, making a customer service call unnecessary.

Problem	Possible Cause	Remedy
Unit does not dispense hot and cold water.	Unit is unplugged.	Plug the power cord into an outlet.
	Main power supply is off.	Reestablish main power supply.
	Damaged water dispenser	Replace the dispenser or send for service
	The water bottle cap is not attached properly to the connector on the water cooler.	Connect properly.
Unit does not dispense cold water.	Over consumption of cold water in a short time.	Wait a moment for the water to cool.
	System Malfunction	Contact dealer
	The ventilation around the unit is insufficient.	Space the unit from the wall by more than 15 cm.
	The temperature of water in the water bottle is too high. (When the bottle is exposed to direct sunlight for a long time.)	Place the water bottle in a cool location out of direct sunlight.
Unit does not dispense hot water.	Over consumption of hot water in a short time.	Wait a moment for the water to heat.
	System Malfunctions	Contact dealer
Unit is noisy during operation.	The appliance is not level.	Place the unit on a level, flat surface.
	Unit is touching other objects.	Move the unit away from other objects.
Water leaks from the faucet.	The top portion of the faucet has become loose.	Tighten the top threaded portion of the faucet.
	The faucet has been damaged.	Call the customer service telephone number to repair the faucet.
Water is dripping out of the water cooler and onto the floor.	The Hose Connector is not connected properly or the inside hot or cold water tanks is leaking.	Make sure the hose connector is properly connected. Contact dealer if a water tank is leaking
	The drain cap on the back is not fastened properly.	Tighten the drain cap. If the sealing silicon material inside the drain cap is torn or damaged, then replace with a new one.
The water being dispensed has a strange taste.	This is not uncommon with new water coolers. Do not worry, this is not dangerous to your health. This water cooler is FDA approved.	Clean the hose in the dishwasher (top rack only) or let it soak in dish soap. The strange taste usually goes away after the first bottle has been used up.



Water Dispenser

TOUCHFREE-UV

OPERATION MANUAL

Please read the instruction manual prior to initial use and keep it for future reference.

Landlines.: 8282-5049; 8282-5098
Mobile Nos. 0908-8908597; 0917-3079188
Email: sales_mktg@colentco.com / iwata@colentco.com
Website: www.colentco.com

IMPORTANT SAFETY INSTRUCTIONS

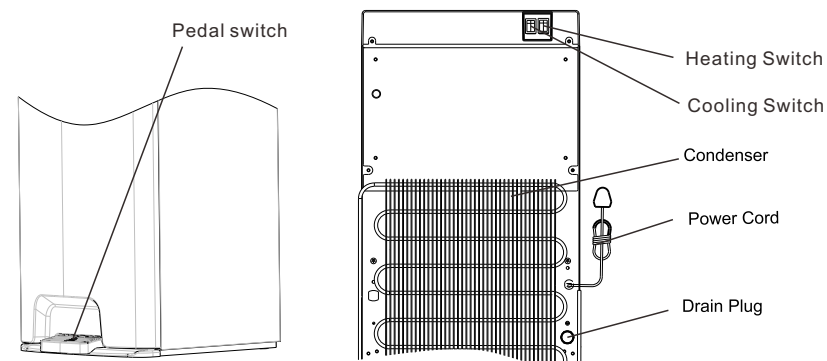
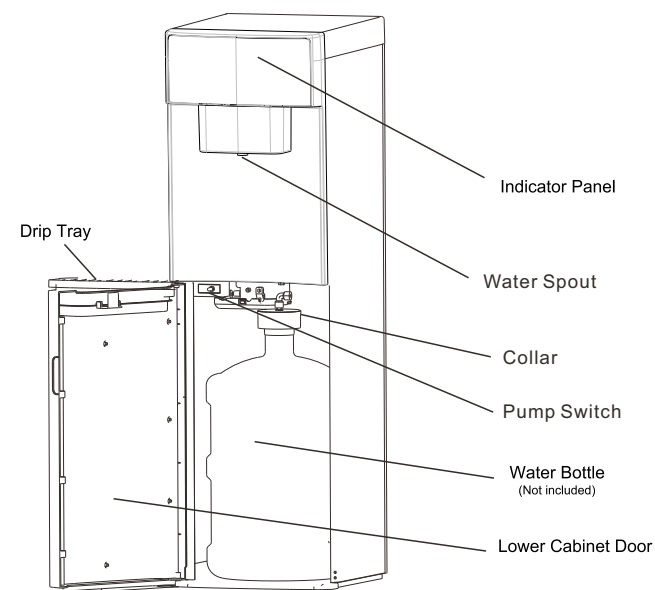
When using electrical appliances, basic safety precautions should be followed to reduce the risk of fire, electric shock, and injury to persons or property. Read all instructions before using any appliance.

1. Do not let hot water touch bare skin. Keep combustible material such as furniture, bedding, pillows, clothes, and/or papers away from the back of the unit.
2. Do not operate this, or any other appliance, with a damaged power cord. No other appliance should be plugged into the same outlet. Be sure that the plug is fully inserted into the outlet.
3. Do not run the power cord over carpeting or other heat insulators. Do not cover the cord. Keep cord away from high traffic areas, and do not submerge in water.
4. We do not recommend the use of extension cord as it may overheat and cause a risk of fire.
5. Exercise caution and use reasonable supervision when the appliance is used by or near children.
6. Do not use your water dispenser outdoors. Place the water dispenser away from direct sunlight and make sure that there is at least 4 inches (10cm) of space between the back of your unit and wall. Keep a minimum of 2 inches (5cm) on each side of your unit free.
7. Do not use this product to dispense anything other than water.
8. To avoid a hazard due to instability of the appliance, it must be placed on even and flat surface.
9. If the supply cord is damaged, the manufacturer or its service agent or a similarly qualified person must replace it in order to avoid a hazard.
10. This water cooler must be positioned so that the plug is accessible.
11. Disconnect the plug from the outlet when not in use.
12. Remove power plug or disconnect from the main power source before servicing the appliance.






TECHNICAL SPECIFICATIONS

MODEL	:TOUCHFREE-UV
RATED VOLTAGE	:230V~
RATED FREQUENCY	:60Hz
HEATING POWER	:500 W
COOLING POWER/CURRENT	:85W/0.8A
HOT WATER	≥90℃ 5L / h
COLD WATER	≤10℃ 2L / h
ENVIRONMENTAL TEMP.	:ST
COOLANT	:R134a, 35g
RELATIVE HUMIDITY	≤90%
PROTECTION OF ANTI-ELECTRIC-SHOCK	:I

PRODUCT DIAGRAM INSTRUCTION



INDICATOR LIGHT DESCRIPTION

	Red	Steady On	Heating is operational.
		Flashing	Hot water dispensing is activated, and ready for dispensing after pressing pedal switch.
		Off	The hot water has reached optimum temperature.
	White	Steady On	UV sterilization function is activated.
		Off	UV sterilization indicator light will turn off after one hour's activation, work for one hour and shut off for next one hour continuously.
		Flashing	Low water level inside water tank, and the water bottle is empty.
	Blue	Steady On	Cooling is operational.
		Flashing	Cold water dispensing is activated, and ready for dispensing after pressing pedal switch.
		Off	The cold water has reached optimum temperature.
	Flashing		Three indicator flash together means the door is open or not closed fully. The pump will not work.
	Cold water touchless sensor under the cooling lamp	It can activate hot or cold water dispensing in two ways 1. Place the palm of your hand approximately 4cm from this icon 2. Touch the icon instead of touchless method	
	Hot water touchless sensor under the heating lamp		

UNPACKING THE WATER COOLER

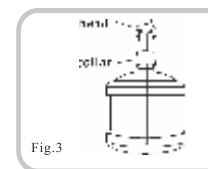
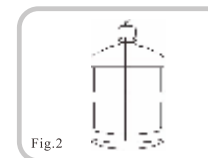
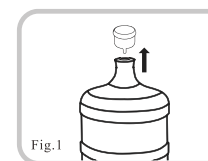
1. Cut and remove the straps from the box. DO NOT turn the box upside down, or lay it on its side. The bottom of the box is separate from the top section. Lift straight up on the top box section to remove the top box section. Remove the Styrofoam packaging and plastic bag. Lift the water cooler off the bottom of the box. Wipe it clean if necessary.

2. Place the machine on a hard, flat surface. Make certain the unit is leveled. The unit should not be placed near to direct sunlight or other source of heat.
3. It is best to place the water cooler in an area with good air circulation. Make sure there is at least 4 inches (10cm) of space between the back of your water cooler and the wall. Keep a minimum distance of 2 inches (5cm) on each side of your water cooler.

WARNING: The drain cap on the back of the unit may become loose during shipping. Fasten the drain cap tightly before you start to operate the unit. If the drain cap is loose, the unit may leak and cause floor damage.

PREPARE YOUR PRODUCT

1. Open dispenser door.
2. Untie the probe assembly from condenser inside the cabinet
3. Place a fresh bottle outside of the cabinet.
4. Remove the entire plastic cap from the top of the bottle. (Fig. 1)
5. Place the probe into the bottle. Slide collar down until it clicks in place. Push the head down until the tube hits the bottom of the bottle. (Fig. 2 for 5 gallon) (Fig. 3 for 3 gallon)
6. Slide the bottle into the cabinet, close the door and plug the unit into electrical outlet.
7. The unit will start to fill the cold and hot water tanks by pumping. (It will take approx. 10 minutes)
8. Dispense water from hot faucet to ensure hot tank is full of water. (refer to "dispense hot water")
9. Turn on the switch on the top back of unit to start heating and cooling function.



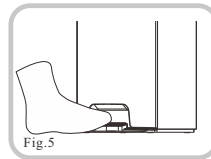
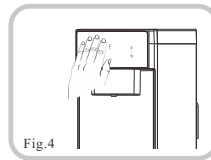
NOTICE: Water will not pump from bottle unless door is fully closed.

Dispense Hot Water



Each time you install a new water bottle, it will take 10-15 minutes to get water to desired hot temperature. While hot water indicator light change from Steady on to off, the unit is ready to dispense hot water.

1. Place the palm of your hand approximately 4cm from the hot water touchless sensor (fig 4)
2. After 2 seconds, there will be a “beep” sound, and meanwhile the heating indicator will start to flash for 5 seconds. At that time, hot water can be dispensed by pressing the pedal switch continuously (fig 5). Otherwise the red lamp will stop flashing, and the heating function need to be reactivated by step 1.
3. Release the pedal switch to stop dispensing hot water, and red heating indicator keep flash for 5 seconds, at that time, hot water can be dispensed again by pressing pedal switch



4. After 5 seconds, red indicator not flash and the unit enter into dormant state. It need to repeat step 1 - step 3 to dispense hot water
5. When the hot water is activated, repeat step 1 until “beep” sound two times, it can cancel the activation status of hot water dispensing

NOTICE: The dispensing will automatically stop after 60 seconds to prevent accidental dispensing for long period of time.

Dispense Cold Water



Each time you install a new water bottle, it will take 45-60 minutes to get water to desired cold temperature. While cold water indicator light change from Steady on to off, the unit is ready to dispense cold water.

1. Place the palm of your hand approximately 4cm from the cold water touchless sensor
2. After 0.5 seconds, there will be a “beep” sound, and meanwhile the cooling indicator will start to flash for 5 seconds. At that time, cold water can be dispensed by pressing the pedal switch continuously. Otherwise the blue lamp will stop flashing, and the cooling function need to be reactivated by step 1.
3. Release the pedal switch to stop dispensing water, and blue cooling indicator keep flash for 5 seconds, at that time, cold water can be dispensed again by pressing pedal switch
4. After 5 seconds, blue indicator not flash and cold water dispensing enter into dormant state. It need to repeat step 1 to step 3 to dispense cold water
5. When the cold water is activated, repeat step 1 until “beep” sound two times, it can cancel the activation status of cold water dispensing

NOTICE: The dispensing will automatically stop after 60 seconds to prevent accidental dispensing for long period of time.

Dispense Normal Water

After “prepare your product”, the unit is ready for dispensing normal water.

1. Make sure the heating or cooling indicator not flash. If heating or cooling indicator is flashing, Please follow the step 5 above to cancel the activation status of hot or cold water dispensing
2. Press the pedal switch directly to dispense normal water, and release the pedal switch to stop dispense normal water
3. The dispensing will automatically stop after 60 seconds to prevent accidental dispensing for long period of time.

Touch function description

This machine can be used by both touch and non-touch operations at the same time. All the non-touch actions above can be replaced by finger touch.

CLEANING & MAINTENANCE

1. To avoid accidents, turn off and unplug the water cooler from the outlet before cleaning.
2. A soft damp cloth may be used to clean the surface of the water cooler. When necessary, a mild detergent may be used. DO NOT use corrosive chemical solvents to clean the unit, as this may damage the surface of the water cooler.
3. DO NOT pour water on the exterior of the unit to avoid getting the internal electrical system wet. DO NOT immerse the unit in water when cleaning.
4. The **water bottle cap, hose, and drip tray** may be washed in a dishwasher (**top rack only**).
5. Keep the water cooler 6 inches (15cm) away from the wall so it can work properly. Make certain all ventilation openings are clear of obstruction.
6. Do not damage the heating or cooling system, paying particular attention to the black condenser or heating radiator on the back of the water cooler.
7. If you will not use the water cooler for a long period of time, please unplug the power cord and drain the water cooler. Drain the water from all faucets, then remove the drain cap on back and allow it to drain. Make certain the drain cap is fastened tightly when finished.