

Important Safety Information

These instructions are not meant to cover every possible condition and situation that may occur. Please read all instructions before using this misting fan. Failure to carefully read all instructions may result in possible electric shock or fire hazard, and will void the manufacturer's warranty.

1. Use this misting fan only as instructed in this owner's manual. Other uses may cause electric shock injury or fire.
2. Close supervision is required if this fan is used near children or pets.
3. To protect against electric shock, do not immerse this fan or its plug and cord in water.
4. If the fan is being transported or will not be in use, disconnect it from the power supply by tightly gripping the fan's plug and pulling it from the power outlet. Do not disconnect the power supply by pulling on the fan's power cord.
5. Avoid contact with any of the misting fan's moving parts.
6. Place the misting fan on a level surface.
7. This misting fan is intended to fit into a matching receptacle. Under no circumstances should the grounded plug be altered in any way. An improper connection can result in electric shock.
8. If possible, avoid using extension cords with this misting fan. If an extension cord is absolutely necessary, do not use more than one extension cord to operate more than one fan.
9. Do not insert objects or allow fingers to enter into the fan head, as this may cause electric shock or bodily injury. Do not block or tamper with the misting fan while it is in operation.
10. Do not place the fan near curtains drapes, or any other materials that can get caught in the misting fan's grills.
11. Do not run the power cord under mats or carpeting, and do not cover the power cord with runners. Arrange the power cord away from room traffic and where it can be tripped over.
12. Do not operate this misting fan in the presence of flammable substances, explosives or corrosive.
13. Do not place the fan near an open flame or cooking/heating appliances.
14. If the fan will not be in use, empty the tank of any remaining water.
15. If the fan's plug or power cord is damaged, do not attempt to repair the components yourself.
16. This appliance is not intended for use by persons (including children) with reduced physical, sensory or mental capabilities, or lack of experience and knowledge, unless they have been given supervision or instruction concerning use of the appliance by a person responsible for their safety.
17. Children should be supervised to ensure that they do not play with the appliance.
18. Damaged supply cords to be replaced by the manufacturer, service agent or similarly qualified person to avoid hazard.

Maintenance

1. In order to keep the machine durable, you should clean the machine timely.
2. Please cut off the power before cleaning and remove the front guard and blade. Clean the machine with soft cloth, (please don't use gasoline or other corrosive liquid) please dry the guard and blade with dry cloth, and then install the machine. (Attention: mist plate inside misting system can't be disassembled).
3. Please don't let water flow into the motor and wet electric elements during cleaning, also don't press / bend the blade and change the pitch angle of the blade.
4. In order to keep water clean in water tank, please wash the water tank and water-receiving plate at a proper time.
5. To ensure machine can oscillate smoothly, please add grease oil to the rotary part of oscillating mechanism every 6 months.
6. Please clean the machine and seal the whole machine with plastic bag before long time storage of the machine.

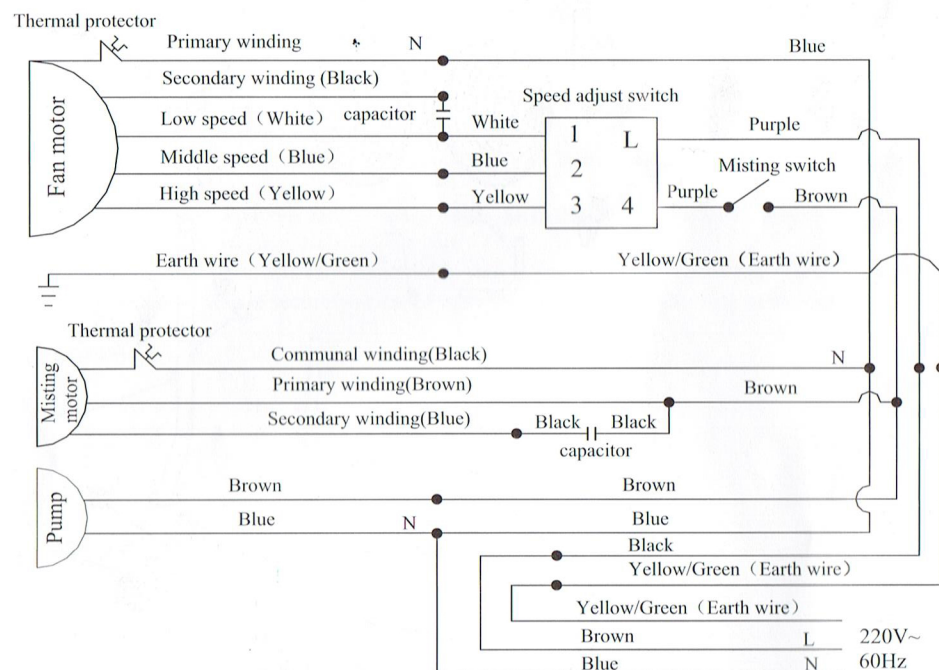


MISTING FAN

Owner's Manual

IMPORTANT SAFETY INFORMATION: Please carefully read this manual before attempting to install or use this misting fan. For your safety, comply with all safety instructions and warnings contained in this owner's manual to prevent personal injury or property damage.

WIRING DIAGRAM



Specification

| Performance | Item | Speed 1 | | | | Speed 2 | | | | Speed 3 | | | | Mist volume (Max) L/h |
|-------------|------|-----------|-------------------|----------|---------|-----------|-------------------|----------|---------|-----------|-------------------|----------|---------|-----------------------|
| | | Speed rpm | Air volume m³/min | Noise dB | Power W | Speed rpm | Air volume m³/min | Noise dB | Power W | Speed rpm | Air volume m³/min | Noise dB | Power W | |
| Model | | 1200 | 165 | 57 | 240 | 1400 | 190 | 62 | 270 | 1600 | 245 | 70 | 300 | 5 |

Specifications are subject to alter without prior notice due to continuous product improvement.

Product Benefits

1. Centrifugal misting system means there is no clogged nozzles and no need to use filtered water.
2. Fan surface is epoxy resin coated, anti-rust and durable.
3. The fan electrical components are designed to be waterproof.
4. Safe to use, with tank cart, easy to move.
5. Air supplying and misting functions are driven by different motors. Motors adopt high quality ball bearings, with advantages of stable, low temperature-rise, long service life, low noise, and strong overloading ability.
6. Misting volume adjustable, the pump adopts full insulation enclosed protective structure for safe operation.
7. It has three adjustable speed and the function of left and right oscillation, easy to use.
8. Designed for cooling large areas such as patios, factories, manufacturing facilities, garages, athletic fields, greenhouses, live stock breeding farms and more.

Operation Instructions

1. Use the fan under the voltage and frequency shown on the rating label, do not use in corrosive environment.
2. Do not install this machine in places where the altitude is higher than 1,000 meters or temperature is over 40 °C .
3. When socket is used in power supply, the socket should meet the IEC335-1 standard; when power liner is from direct power supply, a polarity switch should be installed with contact gap not less than 3mm on the fixation wiring.
4. Oscillating angle adjustment: Loosen the oscillation screw and move it to the desired position (the more outward the more bigger oscillation angle), tighten this oscillation screw after adjustment.
5. Tilting angle adjustment: Loosen the fixing nut and move the motor to the desired position and tighten this fixing nut.
6. Speed adjustment: low speed, medium speed and high speed can be achieved by turning the switch knob on the motor.
7. If the machine is selected to operate by misting mode, its misting magnitude can be adjusted optionally between "OFF" and "ON".
8. The tank must be full filled with water before using the misting mode. The fan can operate continually for 4 hours with the maximum misting volume. Re-fill the tank to achieve the misting effect when it is short of water. Release the water after cleaning the tank by unscrewing the knob on the bottom.
9. When using the handcart, please skid the front cartwheel to avoid glide naturally. When moving the handcart, please loosen the front cartwheel lock. Before loosening the front cartwheel lock, and please do not move it to avoid damage.
10. Please clean the water tank before using. Please take out the water pump before cleaning the water tank .

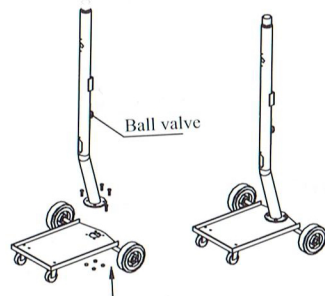
Assembly Instructions

DO NOT plug in the fan before assembly. This misting fan comes in 3 boxes. Carefully remove all packing materials and retain for future storage/use. Make sure there is no residual foam left in any of the components. Check all the components to avoid any parts missing, scratching, or damaging during transportation. A screwdriver and a wrench will be required to assemble this misting fan.

Step 1: Assembling the Stand Pole

- Refer to diagram 1. Locate the tank cart and stand pole. Remove the four M8X25 bolts, spring washer, flat washer, and nuts from the tank cart.
- Position the stand pole on the tank cart and make the ball valve switch face the back. Align the holes on the pole with the four holes on the cart.
- Using the bolts, washers, and nuts removed in step a, screw the stand pole into the tank cart. Make sure the stand pole is securely screwed onto the cart before proceeding to the next step.

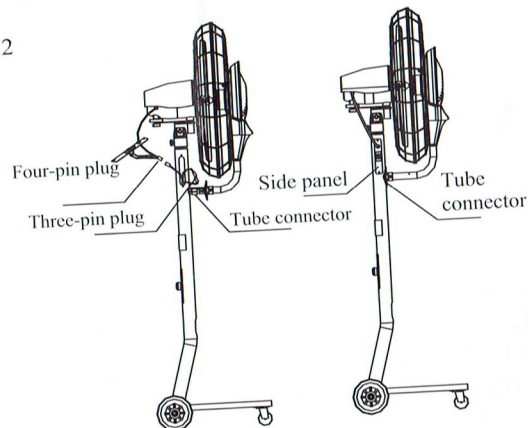
Diagram 1



Step 2: Fan Head and Tubes Assembly

- Refer to diagram 2. Align the stand pole and the bottom of the fan head and connect the two pieces. Fasten the screw to secure the two pieces together.
- Insert the three-pin plug into U-groove hole in front of the stand pole. Plug the three-pin plug into the three-pin socket.
- Connect the two tubes. Make sure each tube connected with its same color tube.
- Plug the four-pin plug into the four-pin socket. Mount the side panel and connector.

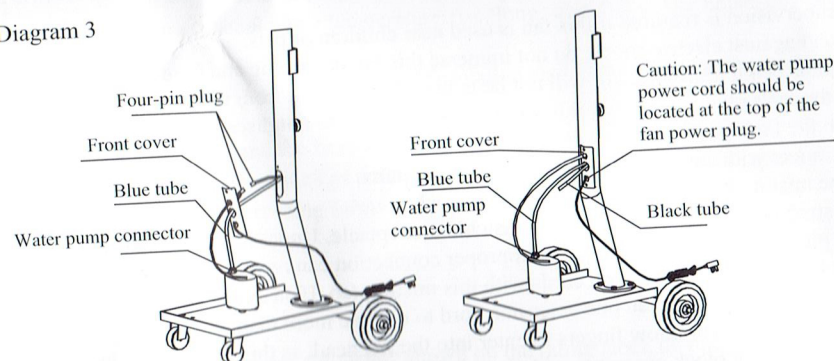
Diagram 2



Step 3: Circuit and waterways connecting

- Refer to diagram 3. Plug the four-pin plug of power cord into four-pin socket on the lower part of the stand pole. And locate them into the stand pole after connection.
- Insert the blue tube and black tube into the round hole of the front cover. Insert the blue tube into the connector of the water pump. Ensure the tubes in the stand pole not bend.
- Mount the front board onto the stand pole and fix with screws.

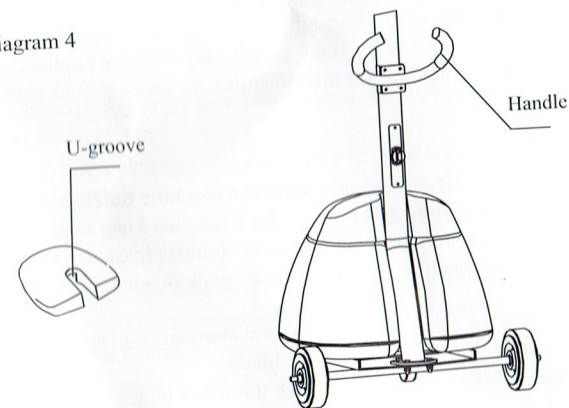
Diagram 3



Step 4: Water Tank Assembly

- Refer to diagram 4. Position the tank on the tank cart; use the two hems to fix the tank.
- Put the water pump into U-groove inside water tank.
- Lid tank cover, ensure pump tube, water recycling tube and pump power cord get through U-groove of tank cover.
- Pull the power cord of the fan out of the tank bottom.
- Mount the handle on the stand pole.

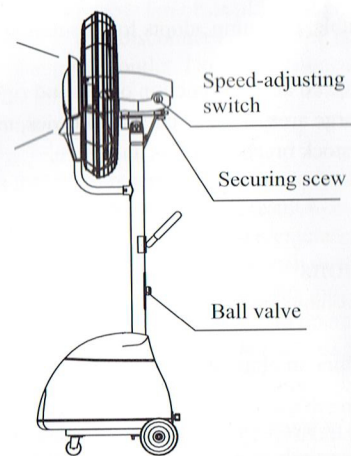
Diagram 4



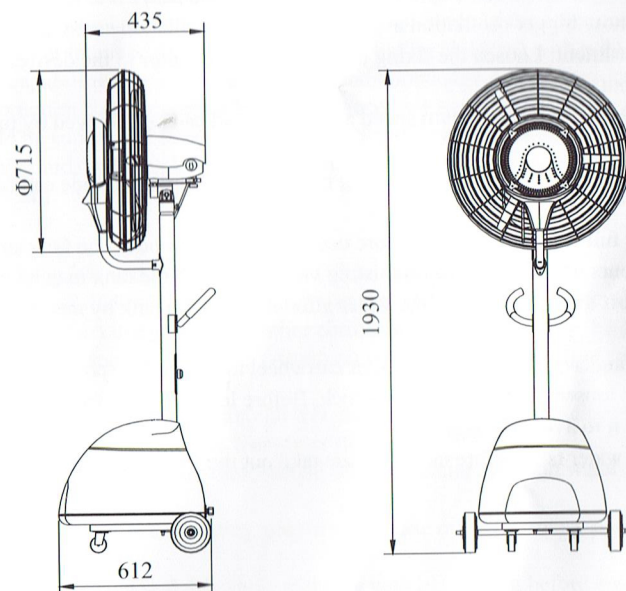
Step 5: Misting Testing

- Full fill the water tank with clean water, and cover the tank lid.
- Keep the ball valve from "on" to "off", and turn power on. Turn the switch knob, and check if the motor and blade operate normally.
- Press misting button, run misting motor and water pump, and check if the misting motor, misting plate and water pump operate smoothly.
- Turn ball valve from "on" to "off", and observe the misting adjustment function.
- Adjust the plastic screw, and check if the oscillation function work smoothly.

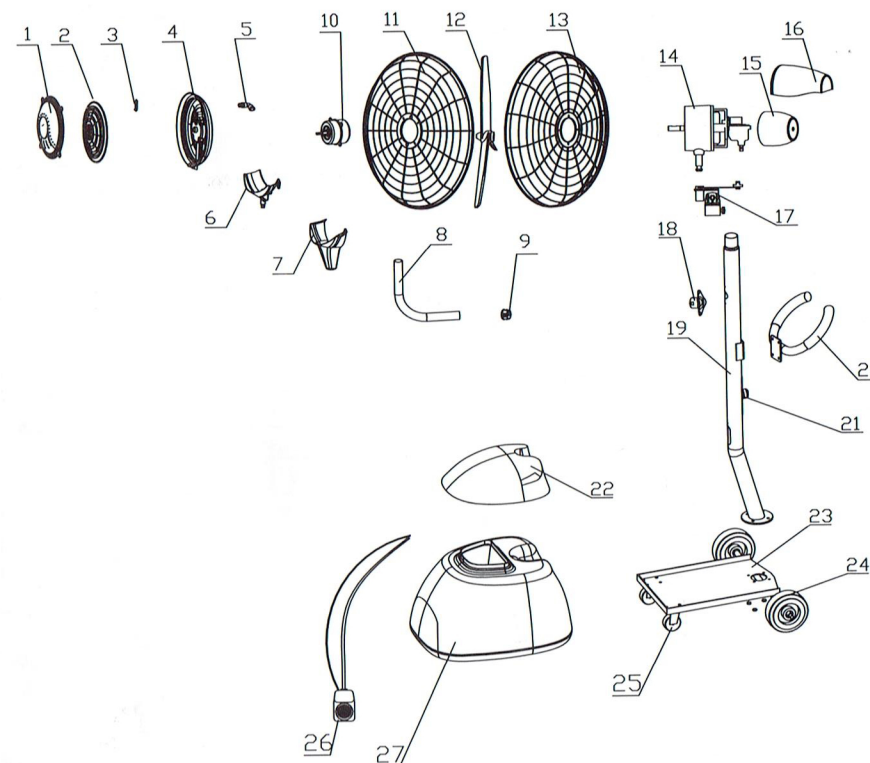
Diagram 5



Product Dimension



Structure Diagram



- | | | |
|--------------------------------|-----------------------------------|----------------|
| 1. safety cover | 13. rear grill | 25. Caster |
| 2. safety grill | 14. fan motor | 26. water pump |
| 3. misting plate | 15. motor cover | 27. water tank |
| 4. water outlet | 16. motor protective cover | |
| 5. whorl bent connector | 17. oscillating structure | |
| 6. water receiving plate | 18. tube connector for stand pole | |
| 7. water receiving plate cover | 19. stand pole | |
| 8. flexible tube | 20. handle | |
| 9. plug | 21. ball valve | |
| 10. misting motor | 22. water tank cover | |
| 11. front grill | 23. tank cart | |
| 12. blade | 24. Wheel | |