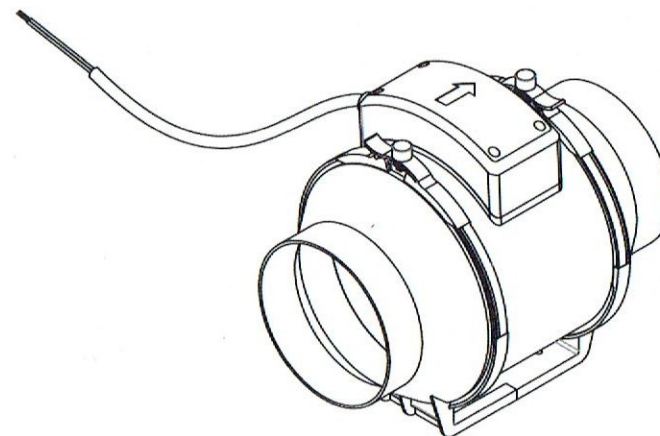




## Mixed Flow Duct Fan



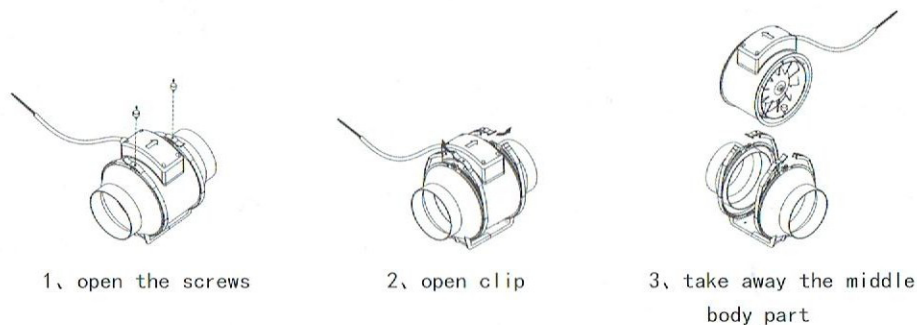
## User's Manual

Before use, please carefully read this manual.

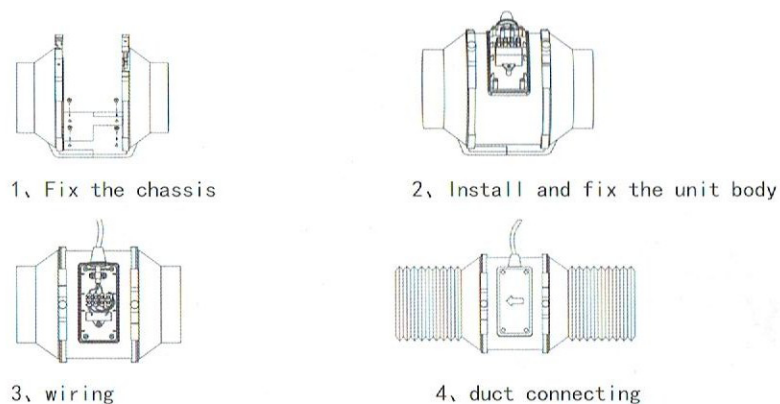
## Product Descriptions

DPT Mixed Flow Duct Fan series is a new product developed by our company on the basis of using advanced technologies abroad, components of the product adopt mode molding; the impeller adopts multi-vane centrifugation design, combining with efficient and smooth air passage, to achieve the effects of high pressure; the complete machine's advantage features include: nice appearance, energy saving, low noise, large air volume, light weight and stable operation etc. The machine can effectively regulate and control air, remove dirty air, moisture and smoke indoors etc, and which can be widely used to ventilate hotels, department stores, entertainment places and residential houses, there shall be no flammable and explosive and corrosive gases in the transportation place, the ambient temperature around the products shall be not higher than 40°C.

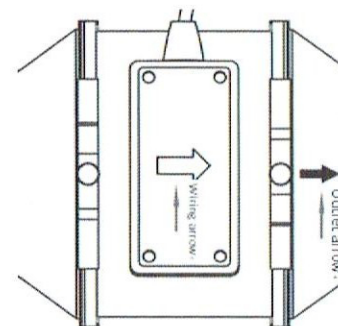
## Installation Instruction



## Simple installation



## Notes of in installation of unit body



※After fixing the chassis, then make sure the same direction between wiring arrow and outlet arrow.

### Parameters

Model	Rated Voltage (V~)	Rated Hz	Power (W)		Air volume (m³/h)		Speed (rpm)		Noise (dB)		Static (pa)		N. W (KG)
			H	L	H	L	H	L	H	L	H	L	
MPF-100	220	60	32	27	185	134	2240	1576	32	26	178	116	1.4
MPF-150			54	49	496	417	2380	2030	42	37	270	214	2.2

### Installation manual

In this manual, we have emphasized the note of installation, usage and maintenance, it is important to read this manual before installation and using of the product.

Please check and make sure if the product is same as your order, make sure the product is in good condition and if the SPEC can satisfy you. Please feedback ASAP once you find any defects in the product.

### Transportation

- \* Package of this product is normal, please use same package in transport to prevent the product from deformation and damage.
- \* Please store the product in dry condition and put in original package before installation to prevent dust accumulation. Client can reject the product in case the package is damaged or the product is used.
- \* Please do not knock, fall down or put heavy item on the product.

### Notes for installer and user

- \* Only qualified technicians can install the product.
- \* Installation must be under national requirement
- \* Related equipments for installation must comply with the following
  - 2006/95/CE low voltage installation regulation

- 2004/108/CE electromagnetic compatibility regulation.

- \* Product applicable in rated sites.
- \* The equipment is not suitable for use in explosive or corrosive conditions
- \* Please make sure there is sufficient recycling air inside the space in case the product used in boiler-room or Combustion equipment room.

\* This product is not suitable for children or infirm people unless who are supervised by the responsible person to ensure their safe use of the product. Children do not play with the product.

#### Notes in installation

- \* Make sure there is not any inhalation of any other items.
- \* Make sure all the accessories to be ready for installation, and the bracket can stand the full-load of the fan.
- \* Make sure the power is off (even the product is switch off) before using.
- \* Check and make sure the main power voltage and HZ is same as rated data in label sticker.
- \* The power must have two poles, and the contactors distance must be at least 3mm. sizes and request must comply with national regulation.
- \* Wiring must comply with circuit diagram.
- \* Please make sure the wiring is correct before earth wire connection, and make sure connection of the over heat and overload wires is correct.
- \* The duct only used for the equipment if the fan installed inside the duct.

#### Before starting

Please make sure the below before starting,

- \* Product fixed well and wiring is correct
- \* Safe protection is installed
- \* No any other items inside fan and ducts.
- \* Earth wire correct connected
- \* Safety protection well connected and adjusted to suitable condition.
- \* wire and connection insulation and water proof.

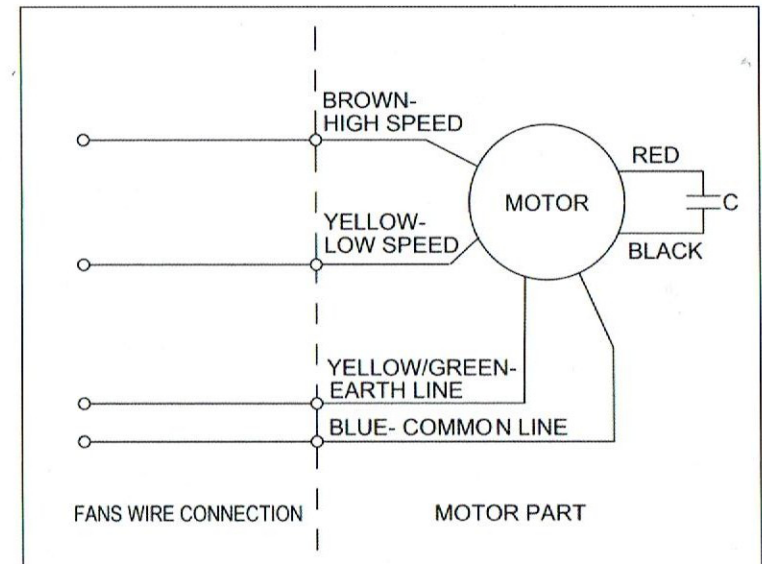
Starting,

- \* Impellers rotating direction is correct
- \* No any abnormal vibration
- \* Once the power device is tripping, must switch off the main power, then examine all the steps before re-starting the machine.

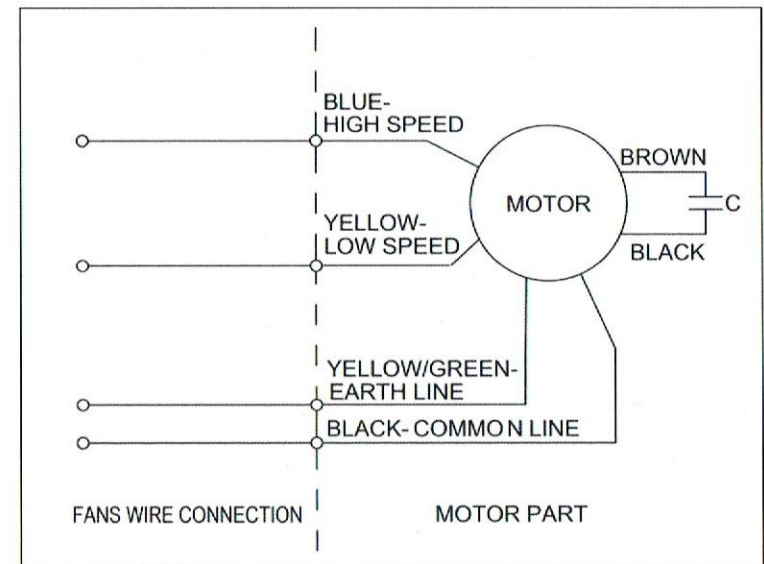
#### Maintenance

- \* Switch off both main power and machine to prevent power supplied by others before maintenance.
- \* Regular check on the machine and ambience to prevent dust accumulation on the impellers, motor and safety net from hazards arising or shorten the product life.
- \* Do not destroy the balance of the impellers in cleaning operation.
- \* All maintenance and repairing operation must comply with national safe regulation

### Wiring instruction

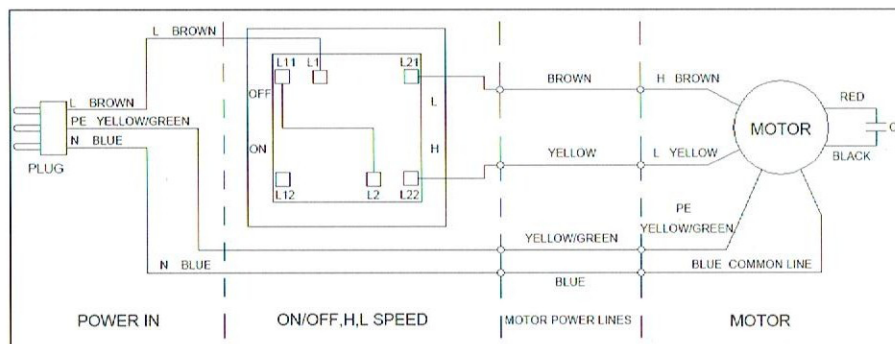


MFF-100 wiring diagram

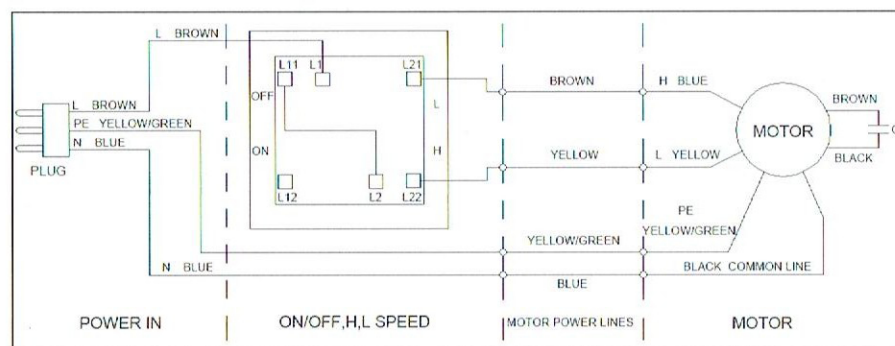


MFF-150 wiring diagram





### MFF-100 wiring diagram



### MFF-150 wiring diagram

[illegible]