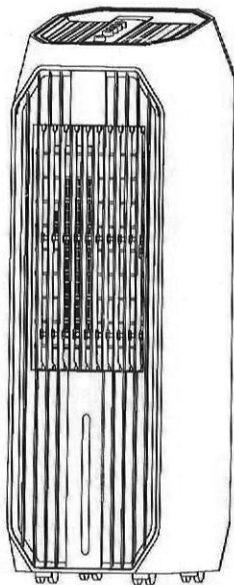


INSTRUCTIONAL MANUAL



AIRCOOL Z25

Thank you for purchasing Iwata air cooler.
Please read this instructional manual prior to initial use and keep it for future reference.

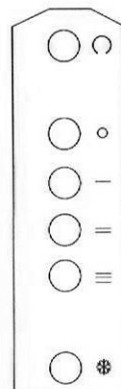
WARNING

- Do not let the wind inlet be too close to the wall / curtain so as not to block the airflow and affect the airflow.
- Please check proper voltage prior to using.
- Inspect power cord & plug prior to using.
- If the power cord is damaged, it must be replaced by the authorized service center to avoid electrical hazard.
- Do not block / cover air outlet when in operation.
- Do not insert finger / body parts on air cooler when in operation or plugged.
- This appliance can be used by children aged from 8 years and above and persons with reduced physical, sensory or mental capabilities or lack of experience and knowledge if they have been given direct supervision or instructions concerning use of the appliance in a safe way and they understand the hazards involved. Children should not play with the appliance. Cleaning and maintenance shall be done by a responsible and knowledgeable adult.
- Please turn off the power before pulling out the plug.
- Do not pull the power plug with wet hands to avoid the risk of electric shock.
- Always keep water level not exceeding MAX level.

1. Technical Parameters

Model No.	Aircool Z25
Power supply	220V~ 60Hz
Power consumption	75W

2. Control Panel



1. ON/OFF (Speed) button

- After plugging the power cord.
- After inserting the device, press the — — = — ≡ button to select low-medium-high speed.
- Press the "○" button to turn the device off.

2. Cool button

- Press the cool button "❄", to activate the water pump. Cool function light indicator turns on.
Note: Cool function will not activate if water level is low.

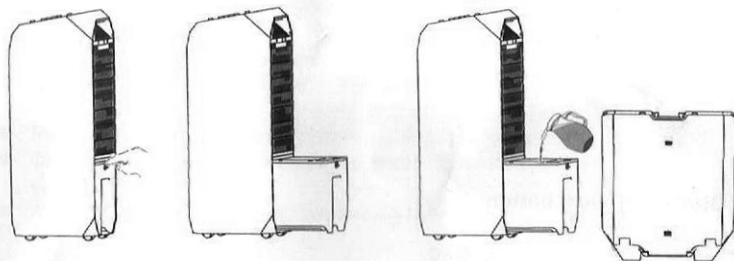
3. Swing button

- Press the swing button "↔", the horizontal louvers will swing left & right. The swing function light indicator turns on.

How to add water in the water tank

First press down the clamp on the water tank behind the air cooler. Then pull out the water tank and add water accordingly.

- Observe water level indicator when adding water.
- Do not exceed max water level.
- Always fill with water which is above the min. water level.
- Use ice or ice packs for maximum cooling efficiency.

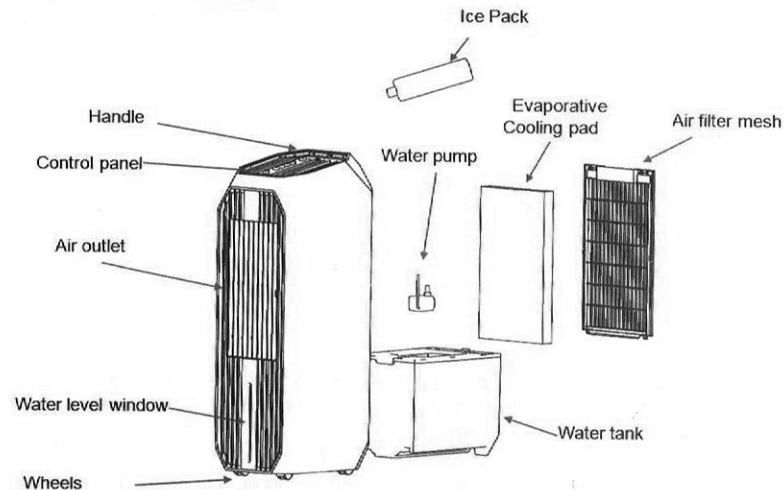


How to use ice packs

Ice packs or ice can speed up the cooling effect of the air cooler when used in tandem with water in the tank. It will provide a cooler wind when properly utilized.

- Add water in the ice pack & freeze accordingly.
- Pull the water tank out and put the frozen ice packs into water tank.
- You can add ice as well if preferred.

Parts Identification



Cleaning the air cooler

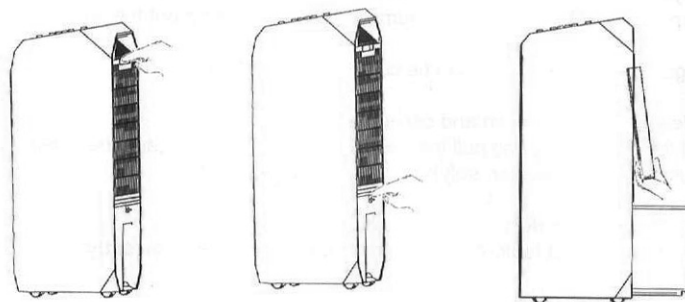


Figure 1

Figure 2

Figure 3

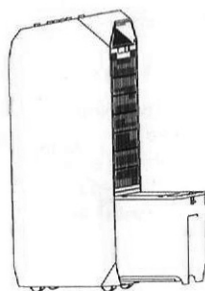


Figure 4

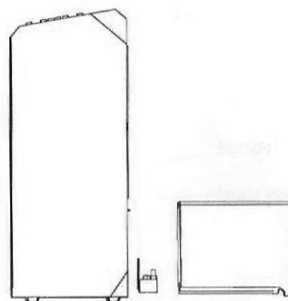


Figure 5

- How to remove the evaporative cooling pad, air filter mesh and water tank :
Figure 1: unlock the upper part of the rear filter mesh with your hands and pull it out to remove the rear filter mesh.

Figure 2: first press down the rear water tank by hand, and then pull out the water tank to 1/3 position.

Figure 3: unlock the bottom of the cooling pad from the water tank by hand, and then pull out the cooling pad.

Figure 4: if you want to take out the water tank and add water or clean it separately, remove the water pump first prior to pulling out the tank.

Figure 5: the water tank can be conveniently removed.

- Cleaning air filter mesh and cooling pad :
Pull the hover plug, and pull the holder of air filter mesh by and then clean air filter using neutral cleaner, soft brush and wash with water.

Important Reminder:

In order to avoid leak, cooling pad must be installed correctly.

For After-sales service:

Berton's Place #46 Sta. Rosa St. Barangay Manresa Quezon City, Philippines.

Tel Nos. 8442-3856; 8442-3866; 3448-7674; 3412-6155; 3413-9503; 8282-5049; 8282-5098

Email: iwata@colentco.com, iwata2@colentco.com,

Iwata3@colentco.com, sales_mktg@colentco.com

Website: www.colentco.com